

# 55-Acre Parcel

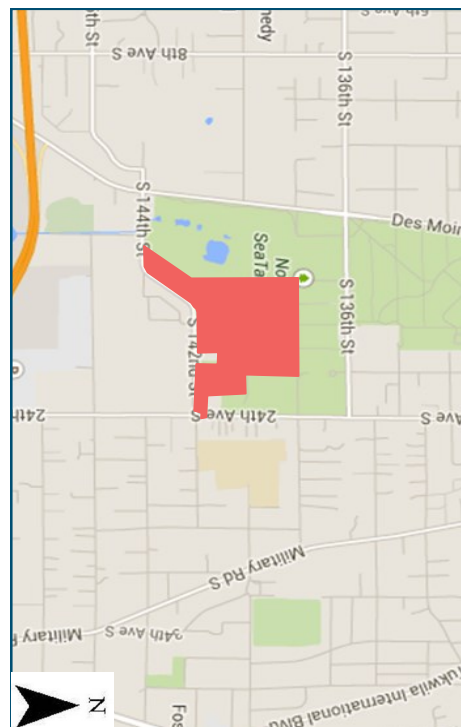
Between S 142nd S and S 136th S  
SeaTac, WA 98158

## General Information

<b>Current Use:</b>	City Park Ground Lease
<b>Location:</b>	North of Airfield
<b>City:</b>	SeaTac
<b>Zoning</b>	Aviation Commercial (AVC)

## Land Information

Total Parcel Size	KC Parcel Numbers
<b>Square Footage</b>	
2,426,292 sq. ft. (55.7 Acres)	#1623049184, #0990000158, #0990000331, #0990000513, #1623049070, #1623049272, #3114000005, #4248400005, #7317400005, #7317400040.



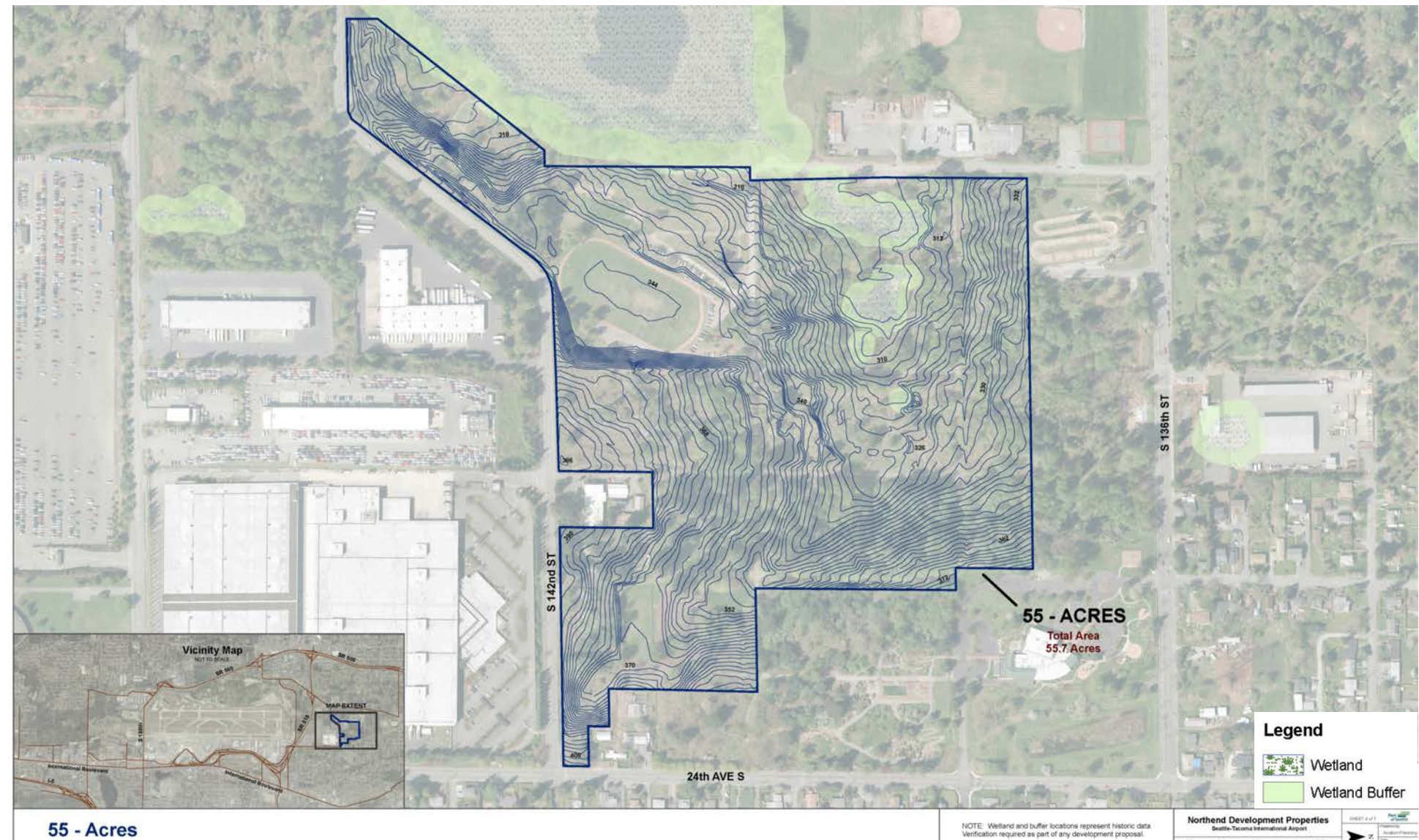
## Restrictions of Use—Based on Funding

Bonds	Airport Improvement Project Fund (AIP)
Please Call for Details	Please Call for Details

Before modifying use of property assess bond restrictions by contacting Corporate Finance & Budget.  
Access AIP's by contacting Airport Finance & Budget.

## Unique Parameters :

55 acre parcel is available for development with a 30 day notice to the City of SeaTac. This parcel is currently utilized by the city with its park and community Center. Excluded in the southwest corner of the parcel is the Valley Kangaroo Rugby Field.



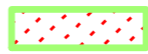
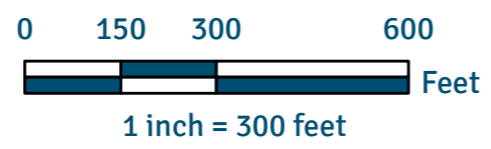


# 55-Acre Parcel

## Option To Develop With Notice

Date Published: 12-31-2014

Disclaimer: This map is for general reference only. Data Layers that appear on this map may or may not be accurate, current, or otherwise reliable. THIS MAP IS NOT TO BE USED FOR NAVIGATION.



Port of Seattle Property Available for Development

Aerial Photo Taken Spring 2012